



WELCOME TO DETROIT, MICHIGAN

Detroit is the largest city in the midwestern state of Michigan. Because of its beautiful architecture and many streets with French names, the city was dubbed “Paris of the West.” Near Downtown, the neoclassical Detroit Institute of Arts is famed for Diego Rivera murals inspired by the city’s long-standing ties to the auto industry, which earned it the nickname “Motor City.” Detroit is also the birthplace of Motown Records, whose chart-topping history is on display at Hitsville U.S.A.

Contents

<u>Climate and Geography</u>	02
<u>Cost of Living and Transportation</u>	03
<u>Sports and Outdoor Activities</u>	04
<u>Shopping and Dining</u>	05
<u>Schools and Education</u>	06

CLIMATE

Detroit and the rest of southeastern Michigan have a humid continental climate which is influenced by the Great Lakes. Winters are cold, with moderate snowfall and temperatures not rising above freezing on an average 44 days annually. Summers are warm to hot with temperatures and the warm season runs from May to September. A decade or two may pass between readings of 100 °F or higher, which last occurred July 17, 2012. The average window for freezing temperatures is October 20 through April 22, allowing a growing season of 180 days.

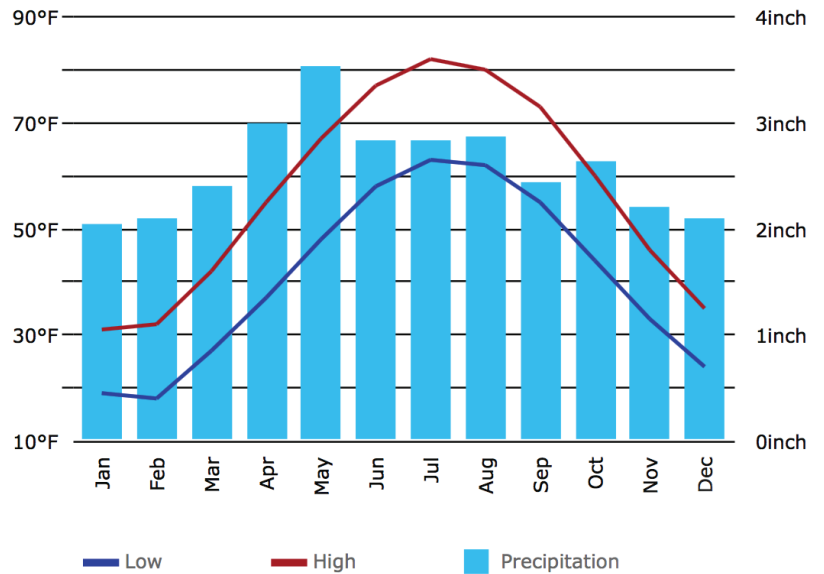
Average High/Low Temperatures

	<i>Low / High</i>
January	19°F / 31°F
July	63°F / 82°F

Average Precipitation

Rain	30 in.
Snow	44 in.

Detroit, MI Climate Graph



GEOGRAPHY

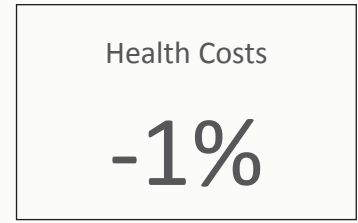
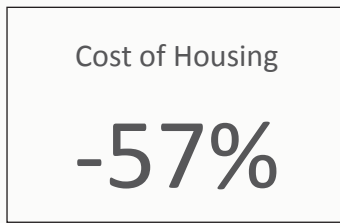
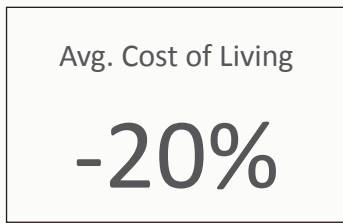
Detroit is the center of a three-county urban area and is the principal city in Metro Detroit and Southeast Michigan situated in the Midwestern United States and the region. The Detroit River International Wildlife Refuge is the only international wildlife preserve in North America, uniquely located in the heart of a major metropolitan area. The Refuge includes islands, coastal wetlands, marshes, shoals, and waterfront lands along 48 miles of the Detroit River and Western Lake Erie shoreline. The city slopes gently from the northwest to southeast on a till plain composed largely of glacial and lake clay. The most notable topographical feature in the city is the Detroit Moraine, a broad clay ridge on which the older portions of Detroit and Windsor sit atop above the river at its highest point.



COST OF LIVING

The overall cost of living in Detroit, MI is 10% lower than the Michigan average and 20% lower than the national average. The average home price in Detroit is \$130,600 less than the national home price average and are experiencing a year over year appreciation rate over 2%. The general prices for good and services, groceries, and transportation are less in Detroit than the national averages.

Key Metrics



% above or below national average

TRANSPORTATION

Highways

Interstate Highways 75, 94, 96, 275, 375, 696

US Highways 12, 24

State Highways 1, 3, 5, 8, 10, 53, 97, 102

Airports

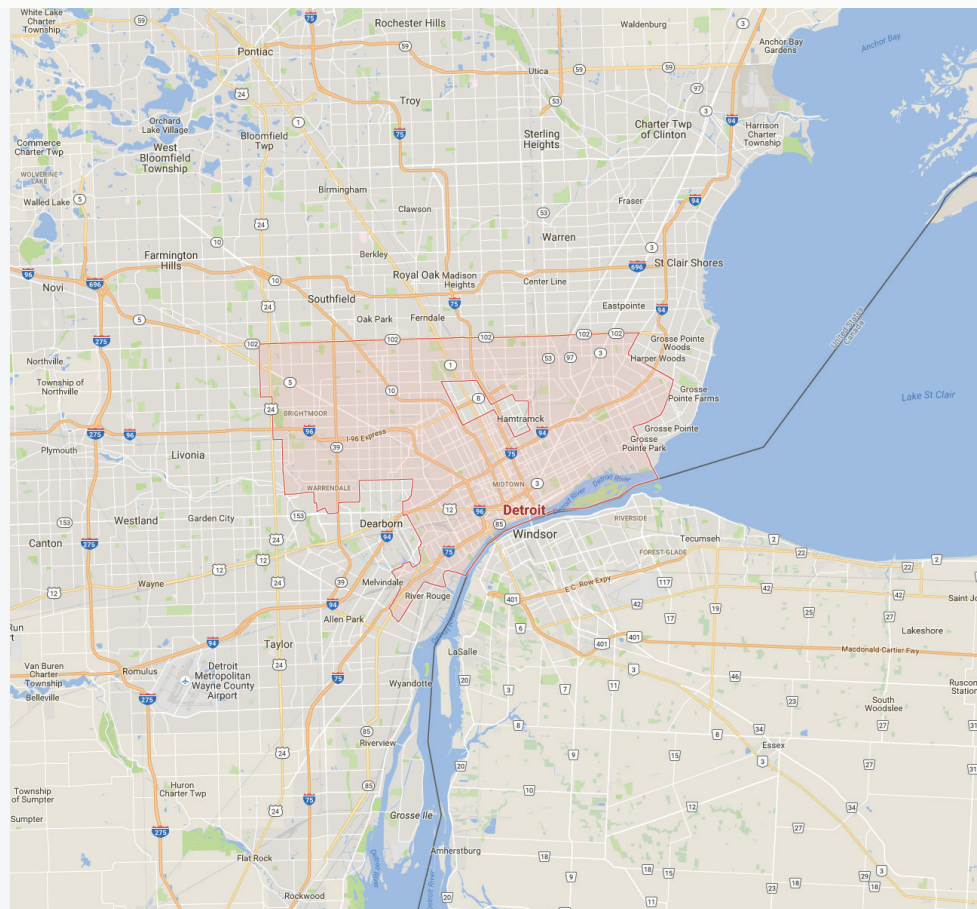
Detroit Metropolitan Wayne County Airport (DTW)

Department of Motor Vehicles

2835 Bagley Avenue

Detroit, MI 48216

<http://www.dmv.org/mi-michigan>



LIFESTYLE & ENTERTAINMENT

The Greater Detroit metro area (think Royal Oak, Berkley, Grosse Point, and Rochester) is incredibly alive, vibrant, and filled with wealthy communities and good schools. As for Detroit itself, there’s no better place to be than the three to five mile radius of Downtown Detroit where new people are moving in and new businesses are opening their doors every day. Neighborhoods like Midtown, Corktown, Indian Village, Woodbridge, and Brush Park are excellent examples of great Detroit neighborhoods, all with high livability scores and close proximity to amenities, restaurants, and entertainment. Detroit is a city that loves its sports. Dubbed “Hockeytown USA” for the dominance of the Detroit Red Wings, it has also has an avid fan base for its other professional teams.

SPORTS

Teams

- MLB - Detroit Tigers
- NBA - Detroit Pistons
- NFL - Detroit Lions
- NHL - Detroit Red Wings

Major Venues

- Comerica Park
- Ford Field
- Joe Louis Arena
- Little Caesars Arena
- The Palace at Auburn Hills



OUTDOORS & ADVENTURE



Parks & Trails

- Campus Martius Park
- Palmer Park
- Windsor Sculpture Park



Fun on the Water

- Belle Isle
- Detroit River
- Riverwalk



Attractions

- Belle Isle Aquarium
- Detroit Zoo
- Hitsville USA



Discover More

- detroit.gov
- michigan.org
- visitdetroit.com

SHOPPING & DINING



A Taste for Everyone

More so than perhaps any other major metropolitan, Detroit’s restaurants are judged not just by subjective standards of quality, but also by their overall significance to the city. Detroit isn’t about the best restaurants or the oldest restaurants or the quirkiest or the trendiest or the most beloved; this is about the restaurants that make an impact beyond their food, and have become a part of the fabric of what it means to eat and live in Detroit. One example, Bucharest Grill, is the shawarma that launched a thousand kissless first dates, and is the stuff of local legend.



A Shopper’s Paradise

The best shopping in Detroit’s downtown area will be found at the Renaissance Center. Home also to General Motors headquarters, The Ren-Cen and its 6 cylindrical towers previously offered mainly office space and few public attractions. Now, the building’s interior treats visitors to a brilliant new Wintergarden that provides views of the Detroit River, a suspended glass circulation ring that helps improve pedestrian flow inside the building’s maze-like interior, a GM-sponsored showroom of historic vehicles, a first-run movie theater, a 1,298-room hotel located in the 73-story center tower, and several prominent restaurants and retailers.

ART & CULTURE

The Detroit area plays home to an astounding collection of museums, galleries and attractions. The city is filled with historic buildings, commemorative and artistic statues, as well as fantastic venues in which to catch top performances of music, dance, and acting.

Theaters:

- City Theater
- Detroit Music Hall
- Detroit Opera House
- Detroit Repertory Theatre
- Fisher Theatre
- The Fillmore Detroit
- Fox Theatre
- Majestic Theatre

Museums & Galleries:

- Charles H. Wright Museum
- Detroit Historical Museum
- Detroit Institute of Arts
- Henry Ford Museum
- Michigan Science Center
- Museum of Contemporary Art



EDUCATION IN DETROIT, MI

Notable Colleges & Universities	
	<p>College for Creative Studies Detroit, MI</p>
	<p>Marygrove College Detroit, MI</p>
	<p>University of Detroit Mercy Detroit, MI</p>
	<p>Wayne County Community College Detroit, MI</p>
	<p>Wayne State University Detroit, MI</p>

Elementary & High School				
<p>Detroit Public School</p> <p>Schools There are 336 public schools in Detroit.</p> <p>Detroit Educational Attainment</p> <table border="0"> <tr> <td>High School Graduates or higher</td> <td>71%</td> </tr> <tr> <td>Bachelor’s Degree or higher</td> <td>13%</td> </tr> </table> <p>Contact Fisher Building 3011 W. Grand Boulevard Detroit, MI 48202 (313) 240-4377 www.detroit.k12.mi.us</p>	High School Graduates or higher	71%	Bachelor’s Degree or higher	13%
High School Graduates or higher	71%			
Bachelor’s Degree or higher	13%			

CONNECT WITH GMS

Founded in 1987, Global Mobility Solution is a global corporate relocation services company that specializes in workforce mobility. The company’s corporate relocation services include global assignment management, domestic relocation management, and a range of pre-decision solutions. Global Mobility Solutions is a back-to-back-to-back winner of the *HRO Today* 2014, 2015, and 2016 “Baker’s Dozen” customer satisfaction surveys.

Online Resources
www.gmsmobility.com
LinkedIn: Global Mobility Solutions

Phone & Email
1-800-617-1904
info@gmsmobility.com

